

**Prolactin Receptor Antibody**  
**Rabbit mAb**  
**Catalog # AP91497****Specification**

---

**Prolactin Receptor Antibody - Product Information**

Application	WB, IHC, ICC
Primary Accession	<a href="#">P16471</a>
Reactivity	Rat
Clonality	Monoclonal
<b>Other Names</b>	
CPRLP; HPRL; hPRL receptor; Lactogen receptor; MFAB; OPR; Pr-1; Pr-3; PRLR; Prolactin receptor a;	
Isotype	Rabbit IgG
Host	Rabbit
Calculated MW	69506 Da

**Prolactin Receptor Antibody - Additional Information**

Dilution	WB~~1:1000 IHC~~1:100~500 ICC~~N/A
Purification	Affinity-chromatography
Immunogen	A synthesized peptide derived from human Prolactin Receptor
Description	Activate multiple signal transduction pathways in breast cancer cells, including the Jak/Stat, PI3K/Akt, and MAPK pathways, leading to both pro-proliferative and anti-apoptotic downstream effects.
Storage Condition and Buffer	Rabbit IgG in phosphate buffered saline , pH 7.4, 150mM NaCl, 0.02% sodium azide and 50% glycerol. Store at +4°C short term. Store at -20°C long term. Avoid freeze / thaw cycle.

**Prolactin Receptor Antibody - Protein Information****Name** PRLR**Function**

This is a receptor for the anterior pituitary hormone prolactin (PRL). Acts as a prosurvival factor for spermatozoa by inhibiting sperm capacitation through suppression of SRC kinase activation and stimulation of AKT. Isoform 4 is unable to transduce prolactin signaling. Isoform 6 is unable to transduce prolactin signaling.

**Cellular Location**

Membrane; Single-pass type I membrane protein

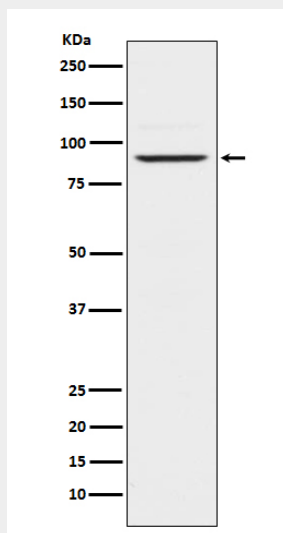
**Tissue Location**

Expressed in breast, placenta, kidney, liver and pancreas.

**Prolactin Receptor Antibody - Protocols**

Provided below are standard protocols that you may find useful for product applications.

- [Western Blot](#)
- [Blocking Peptides](#)
- [Dot Blot](#)
- [Immunohistochemistry](#)
- [Immunofluorescence](#)
- [Immunoprecipitation](#)
- [Flow Cytometry](#)
- [Cell Culture](#)

**Prolactin Receptor Antibody - Images**

Western blot analysis of Prolactin Receptor expression in Jurkat cell lysate.